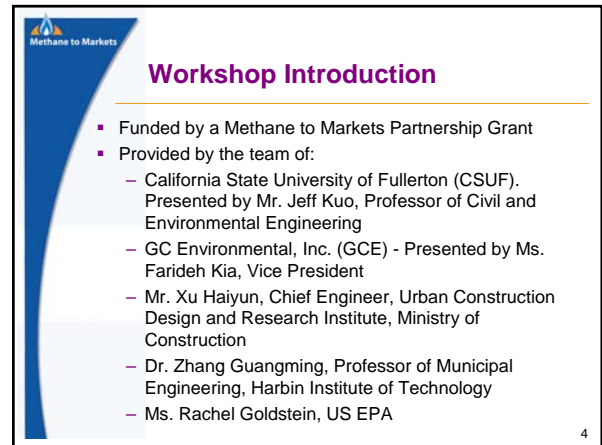


2. Introduction (English)





## 2. Introduction (English)

**Methane to Markets**

### The Project Network

- Project network members are private firms, development banks, NGOs or other governmental and non-governmental entities with an interest in methane recovery and use projects
  - Private sector and broad stakeholder involvement is central to the success of the Partnership
  - Provide technical input and expertise
  - Participate in all activities and meetings
  - Identify and implement activities and projects
- Currently about 650 organizations
- Organizations can join on-line at [www.methanetomarkets.org](http://www.methanetomarkets.org)

13

**Methane to Markets**

### Methane to Markets '07 Landfill Accomplishments

- Partnership Expo (Beijing, China)
  - Featured 40 landfills (15-yr = 17,553,000 MTCO<sub>2</sub>e)
- Prepared 8 Pre-feasibility Studies and 25 Assessment Reports
- Latin American Project Expo (Ecuador hosted)
- Awarded 12 grants totaling \$1.4 million
- Conducted 5 LFG Training Workshops
- Launched International Landfill Database

14

**Methane to Markets**

### Why China?

- China is a founding country of the Methane to Markets Partnership
- The population in China is approximately 1,300,000,000
- Estimated refuse generated per person is 0.6-1 lb/day
- Estimated annual waste is between 129,200,000 and 215,400,000 ton per year
- Estimated methane generation is between 4,800,000 and 13,4000,000 m<sup>3</sup>/year

15

**Methane to Markets**

### U.S. Involvement: China-Landfill Sector

China

- Hosted the Methane to Markets Partnership Expo
- 11 landfill opportunities highlighted at the Expo
- Assessment studies of three landfills
- Pre-feasibility studies of one landfill



16

**Methane to Markets**

### For More Information

[www.methanetomarkets.org](http://www.methanetomarkets.org)

- Rachel Goldstein (U.S.EPA)
  - [Goldstein.rachel@epa.gov](mailto:Goldstein.rachel@epa.gov)
  - +1.202.343.9391



17

**Methane to Markets**

### For More Information.....

- [www.methanetomarkets.org](http://www.methanetomarkets.org)
- [www.epa.gov/lmop](http://www.epa.gov/lmop)
- [www.epa.gov/cmop](http://www.epa.gov/cmop)
- [www.epa.gov/agstar](http://www.epa.gov/agstar)
- [www.epa.gov/gasstar](http://www.epa.gov/gasstar)

18