

Agriculture Update

[Ethiopia]

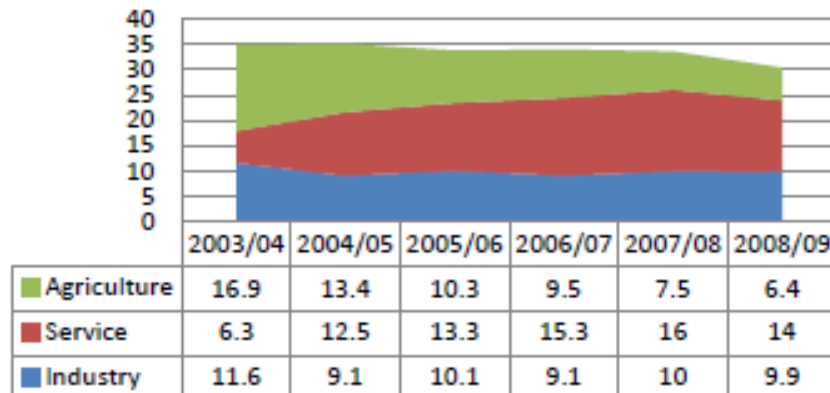
Daniel Fikreyesus
GMI Agriculture Subcommittee Meeting
Singapore, 2-3 July 2012



Agriculture

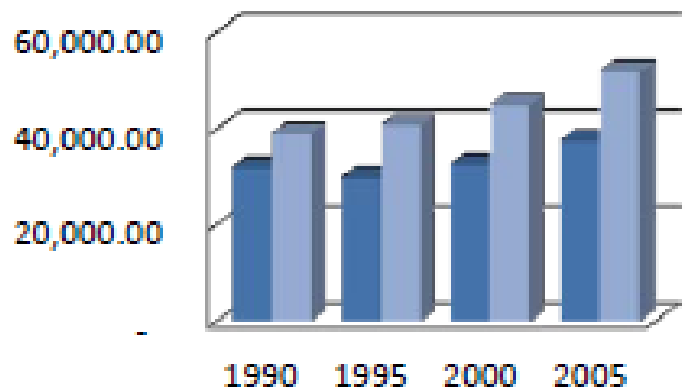
- 45% of the GDP.
- Employees 85 % of the labor force.
- 90 % of the country's exports.
- Livestock production is 32 % of agricultural.

Sectoral Growth Rate



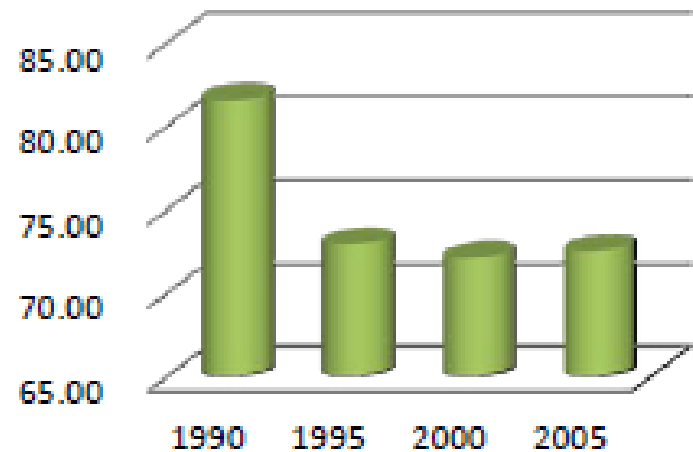
Methane Emissions in the Agriculture Sector

Ethiopian Methane Emission



- Agricultural methane emissions (thousand metric tons of CO2 equivalent)
- Methane emissions (kt of CO2 equivalent)

Agricultural methane emissions (% of total)



- Agricultural methane emissions (% of total)

CRGE

Goal of the sectors and implications

1 Power



- Build generation capacity to satisfy growing demand

2 Gr. Cities



- Reach economic growth targets as planned in the GTP

3 Forestry



- Economic growth of each sector will lead to higher emissions

4 Soil



5 Livestock



6 Transport



7 Industry



Contribution of CRGE

- **Enable** infrastructure development by developing strategy to **obtain financing**

- Develop green growth initiatives to **achieve GTP targets** while **reducing emissions**

- Provide essential analytics required to **secure carbon funding**

- Estimate business-as-usual (BAU) emissions
- Develop list of green growth interventions
- Estimate abatement, growth contributions and feasibility of interventions
- Develop implementation plans

Potential for Methane Reduction Activities

- 5,167 small, medium and large dairy farms.
- 250 to 300 feedlots.
- No Centralized Data.
- Ethiopian Meat and Dairy Technology Institute (EMDTI).
 - Has the mandate to assist dairy farms in AD

Potential for Methane Reduction Activities



Current Practice

- Open dumping
- Drying and use as fire



Methane Reduction, Recovery, and Use Initiatives

- Institutional use – nonexistence (four known working biogases)
- National Household Biogas Program
 - 3,000 built biogases
 - On hold



Barriers/Challenges to Methane Reduction, Recovery, and Use

- Lack of knowledge
- Lack of institutional support
- Absence of mechanization in dairy farms
 - Limited use of biogas
- Household
 - Time consuming to build – upto six months
 - Expensive
 - Challenges at the Agency

Statement of Purpose

- Continue to specialize in one area – AD
- Work on enteric fermentation with other agencies – USAID, Universities that have more expertise