



## Coalbed Methane Regulation

January 2009

# Background

## Reforming the Mining Law (June 26, 2006)

The reform of the Mining Law defined coalbed methane, the gas associated with mineral coal fields, as mineral or substance.

This legal reform implies the recovery of this type of gas to improve safety during the exploration of coal. In addition, the new law meant that if the gas associated with coal fields can be distinguished from the gas associated with oil, it can be concessional.

# Main elements: definition

## Definition of associated gas to coal

“Gas associated with deposits of coal mainly formed by methane, genetically linked to the process of formation of coal, and that is trapped inside the layers of coal.”

This means, according to the Mining Law, that concessions for private agents can be granted for the use and utilization of coalbed methane.

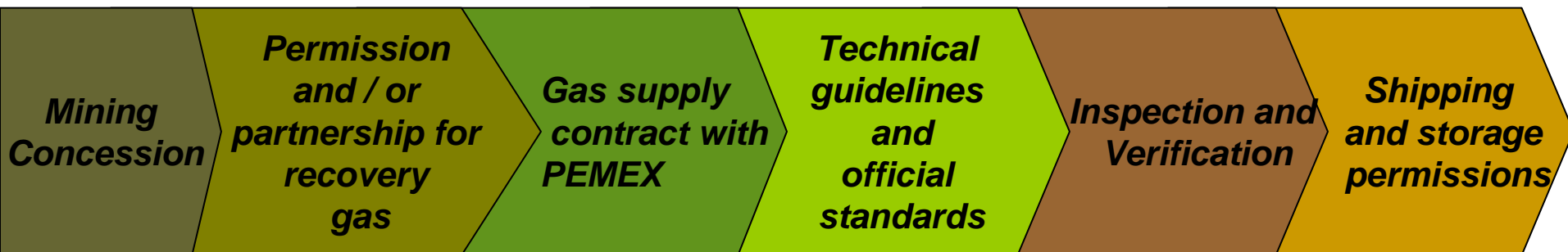
# Main elements: SENER Faculties

SENER Faculties	SE Faculties	Joint Faculties
Issue, deny or cancel permissions for the recovery and utilization of coalbed methane	Verify the implementation and verification of works	Develop policies for recovery and utilization of coalbed methane
Allow, deny or cancel associations of concessionaires for the recovery and utilization of gas;	Conduct inspections;	Establish the terms and technical conditions for the recovery and utilization of gas
Issue general administrative arrangements subject to permissions for the recovery and utilization of coalbed methane	Check the measurements of the volumes of gas used or recovered.	Set terms and conditions of transport, storage and processing
Issue contracts to deliver gas to Pemex. Establish terms and conditions;		Assess the feasibility of projects for recovery and utilization of gas;
Establish terms and methodology for payment for the delivery of Gas.		Develop basis for tenders of gas concessions
Solution of complaints against actions of PEMEX		

# Main elements: Regulatory Framework

The regulatory model of the industry can be summarized as follows:

## Regulatory model for the recovery of coalbed methane



# Main elements: Regulatory Framework

*Mining  
Concession*

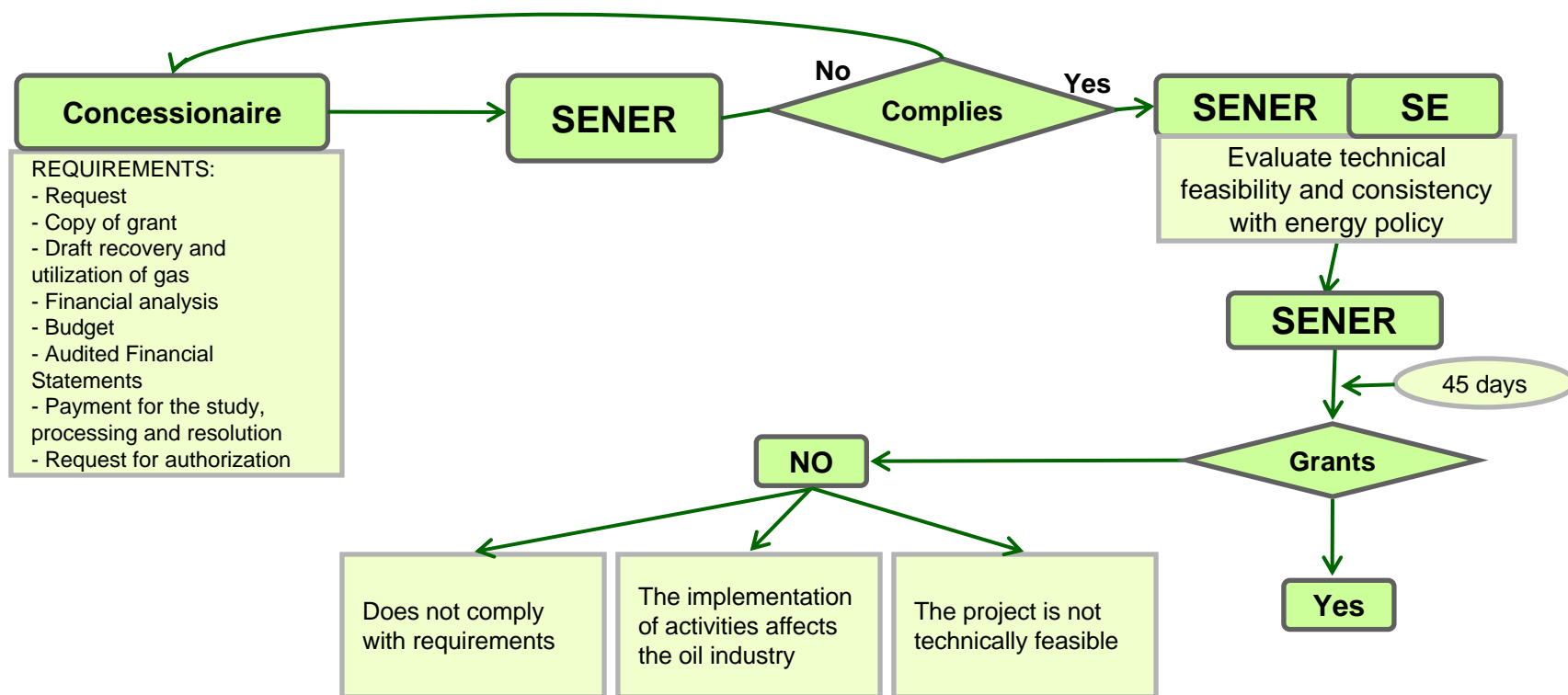
Granting of mining concessions

The Ministry of Economy, according to the Mining Law, is empowered to compete and give mining concessions.

It was agreed that the Ministry of Energy will participate in this process, when deposits of coalbed methane exist, in order to give consistency to the national energy policy.

# Main elements: Regulatory Framework

*Permission  
and / or  
partnership for  
Recovery gas*

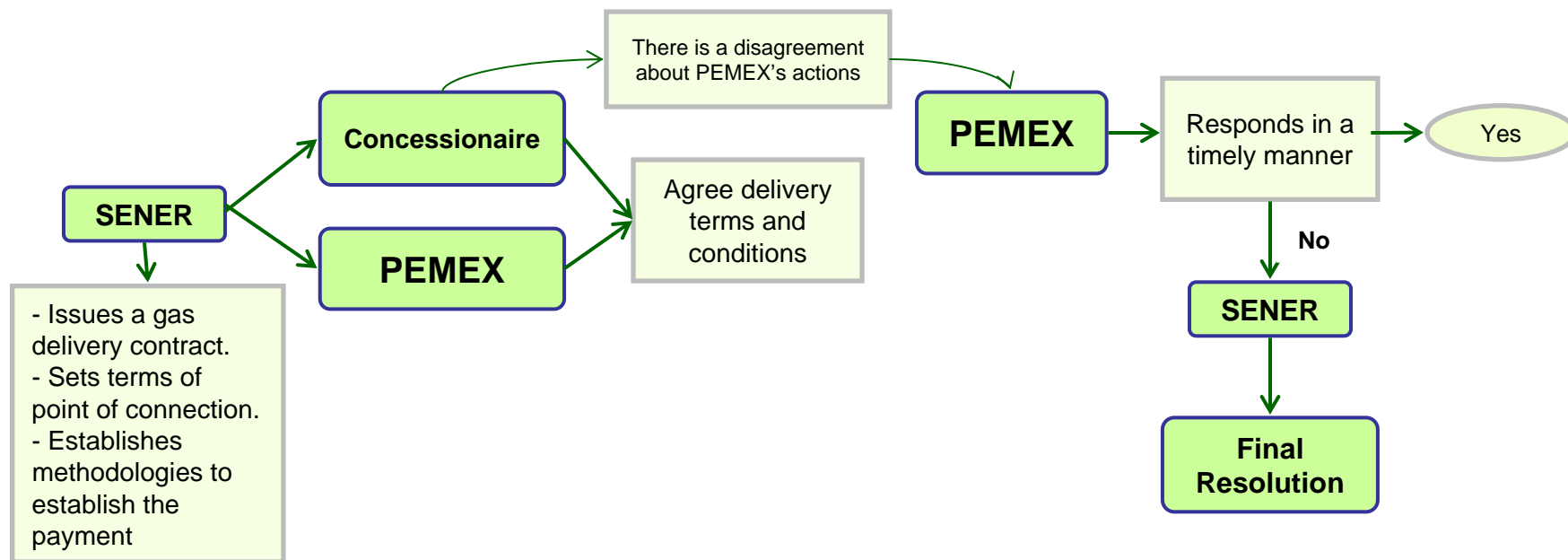


Authorization for association in order to use and recover coalbed methane

# Main elements: Regulatory Framework

**Gas supply  
contract with  
PEMEX**

Gas delivery contract between the concessionaire and PEMEX



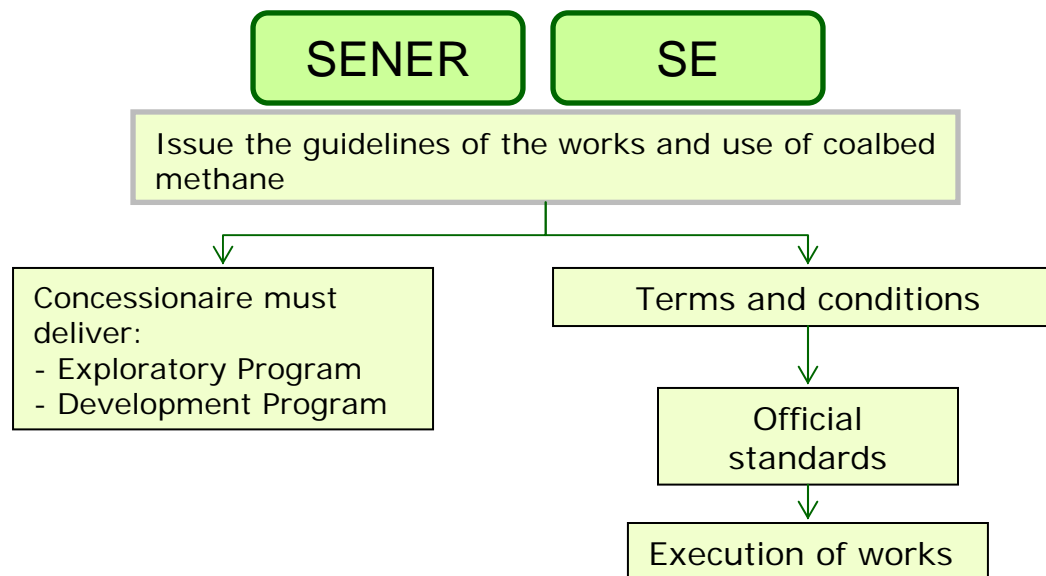
*PEMEX must prepare an annual report on complaints received.*



# Main elements: Regulatory Framework

*Guidelines  
Technicians  
and official  
standards  
works*

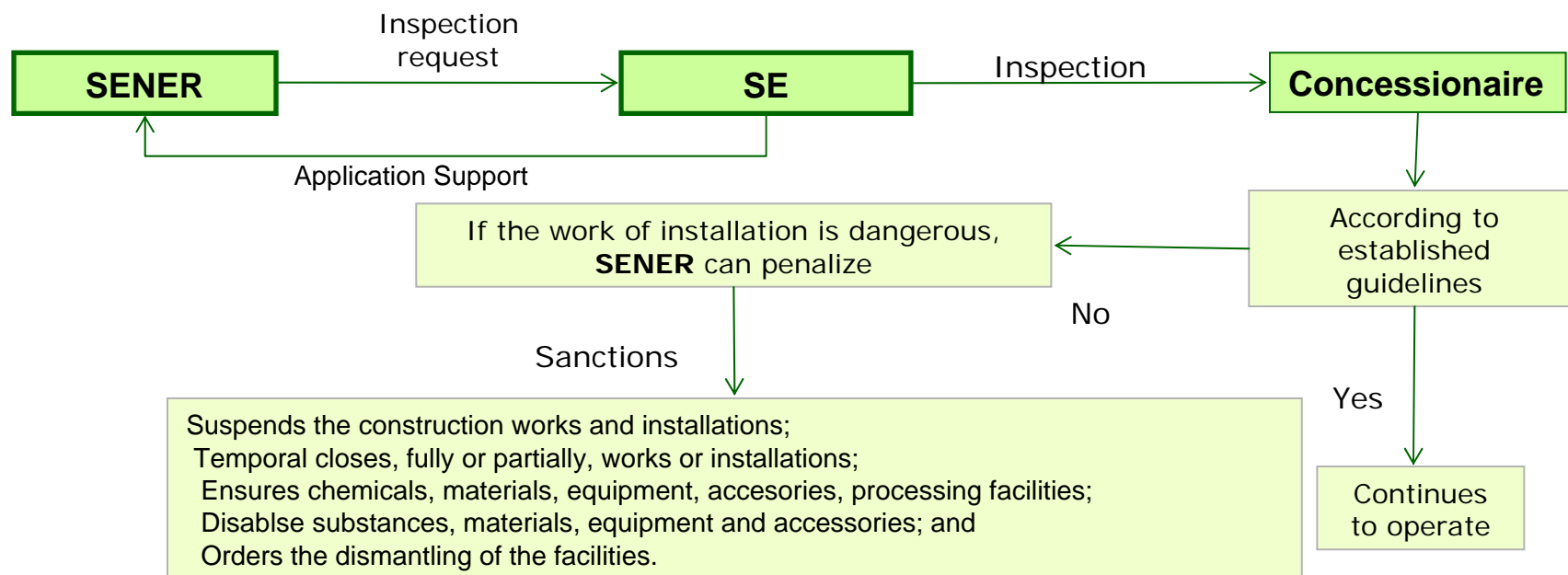
## Technical guidelines and Mexican Official Standards (MOS)



# Main elements: Regulatory Framework

*Inspection and  
Verification*

## Inspection and verification work



# Main elements: Regulatory Framework

*Inspection and  
Verification*

SENER

The Concessionaire  
chooses a Verification  
Unit

Verification of compliance with  
Mexican Official Standards (MOS)

### **Duties of Verification Units:**

- I. Verify compliance with the Mexican Official Standards and applicable laws.
  - II. Others established in the Regulations.
- NOTE: Monitoring Unit will be responsible for the accuracy of opinions issued.

Penalties for failure to comply with  
the MOS

Suspends the construction works and installations;  
Temporal closes, fully or partially, works or installations;  
Ensures chemicals, materials, equipment, accesories, processing facilities;  
Disable substances, materials, equipment and accesories; and  
Orders the dismantling of the facilities.

# Main elements: Regulatory Framework



*Shipping  
and storage  
permissions*

## Permission for transportation, storage and processing

Coalbed methane is considered a mineral substance until it complies with the Official Standards for Natural Gas . Therefore, the regulation related to transportation, storage and processing of gas is a shared responsibility between SENER and SE.