



Josilene Ferrer

João Wagner Alves

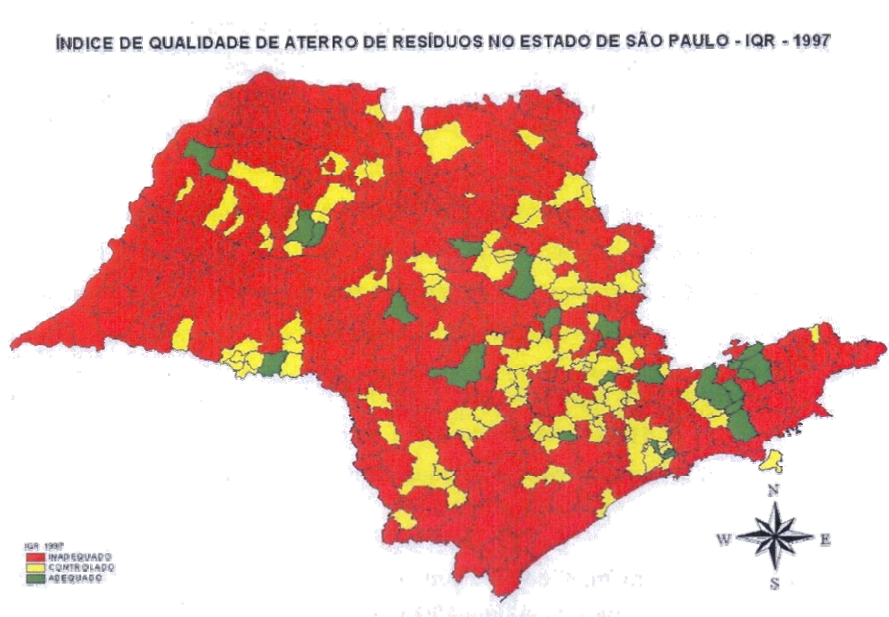
December, 12nd, 2008



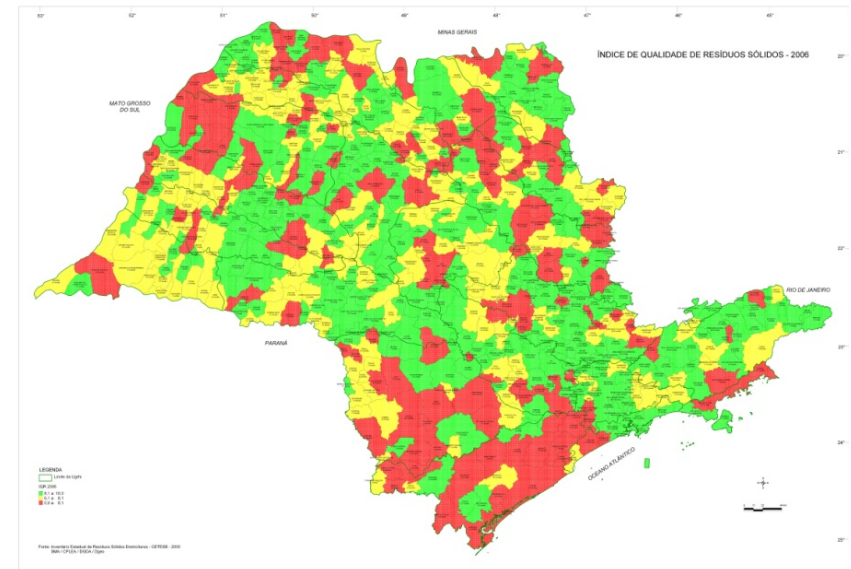
SECRETARIA DO
MEIO AMBIENTE



Landfill management in Sao Paulo State



IQR in 1997



IQR in 2007

● open dump (IQR < 6,0) ● controled landfill (6,1 < IQR < 8,0) ● sanitary landfill (IQR > 8,1)

Final destination of urban solid waste in Brazil

(Source: IBGE 2000)

- 59 % open dump
- 13 % sanitary landfill
- 17 % controlled landfill
- 0,6% flood area
- 3% special waste landfill
- 2,8% recycling
- 4% composting
- 0,2 % incineration



Approval of National Politics of Solid Waste Management



Voluntary and CDM Projects are available : BM&FBovespa – Carbon Market

The screenshot shows a Windows Internet Explorer browser window displaying the BM&FBovespa Carbon Market website. The address bar shows the URL <http://www.bmf.com.br/portal/pages/mbre2/>. The browser's menu bar includes options like Arquivo, Editar, Exibir, Favoritos, Ferramentas, and Ajuda. The website header features the BM&FBovespa logo with the tagline "The New Exchange" and the text "BM&F Market". Below the header is a navigation menu with links for Daily Bulletin, Contracts, Agribusiness, Services, PQQ, and Participants. The main content area includes a "Home" link and a "Carbon Market" section. A login form is visible with a "Login" label and an "OK" button. A sidebar on the left contains a list of links: Inside Brazilian Carbon Market, Clean Development Mechanism, BM&F Carbon Facility, Auction for the sale of CER, Documents, FAQ, Partners and Other Sites of Interest, Legal Notice, and Contact us. The background of the sidebar features images of a forest and the Earth from space. The Windows taskbar at the bottom shows several open applications, including Yahoo! Babel Fish, a web browser, Microsoft PowerPoint, and Paint, along with the system clock showing 17:54.

<http://www.bmf.com.br/portal/pages/mbre2/>

Workshop



ELIMINAÇÃO E USO
ENERGÉTICO DE
BIOGÁS DE ATERRO



10 e 11 de junho de 2008

SÃO PAULO
BRASIL



REALIZAÇÃO



SECRETARIA DO
MEIO AMBIENTE



Bandeirantes Landfill



Internacional Forum: Management of waste and recovery of biogas in Brazil



Internacional Forum: Management of waste and recovery of biogas in Brazil



Internacional Forum: Management of waste and recovery of biogas in Brazil



http://homologa.ambiente.sp.gov.br/biogas/cursos_seminarios/forum_internacional/album.asp

Contact:

Josilene Ferrer - josilenef@cetesbnet.sp.gov.br

João Wagner Alves – joaoa@cetesbnet.sp.gov.br



Brazilian biogas: webpage: www.cetesb.sp.gov.br/biogas and

e-group: rededeinventario@yahoogrupos.com.br



SECRETARIA DO
MEIO AMBIENTE

